



Honda Grom® & Monkey®



KOSO 
NORTH AMERICA

www.kosonorthamerica.com

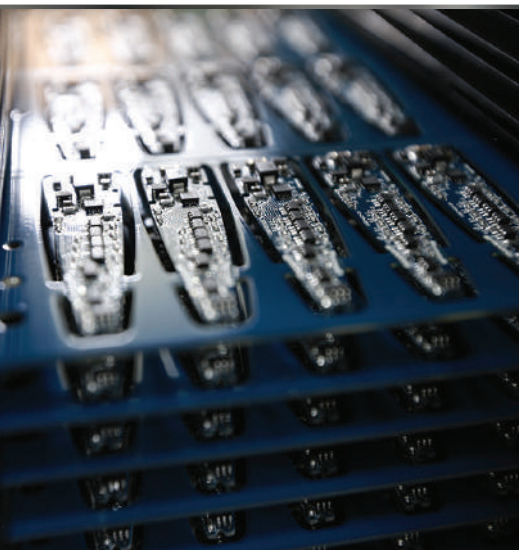
2026

Koso's philosophy

Koso, a synonym for quality and performance. With more than 35 years of experience designing and manufacturing high-quality products, Koso has become well known across the powersports and OEM industries for its good reputation for reliability, innovation and capability. Whether we are manufacturing a product under private label, OEM or aftermarket products, quality always remains our top priority. Innovation and creating new technologies are the keys to Koso's philosophy and drives us to continue pushing the limit further.

For several years now, Koso has had the opportunity to work with an outstanding team of engineers. Along with our state-of-the-art testing equipment and production facilities, Koso has remained a leader in analog and digital technology. Koso produces a wide range of quality gauges/meters, heated equipment, LED indicators taillights and headlights as well as mirrors and engine parts. Koso is proud to offer a complete line of quality products for serious riders.

KOSO 
NORTH AMERICA





Meters & performance

MS-01

new

part

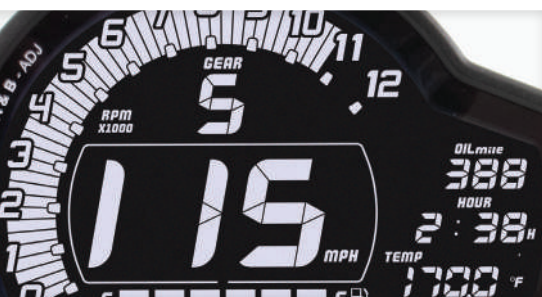
BA078100-GR

Fits Honda Grom® 2013-2021

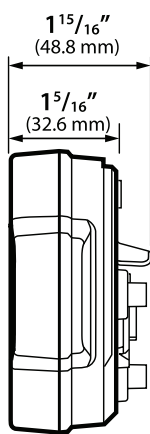
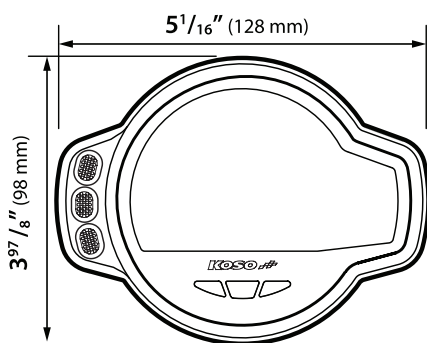
Multifunction meter - for Honda Grom® (2013-2021)

Compact, easy to operate and full of features, the new plug and play MS-01 multifunction meter for Honda Grom® offers a sleek looking exterior as well as a negative LCD screen to display necessary information such as: speed, RPM, indicator lights, fuel meter, gear indicator and much more.

This easy to use and install plug and play display will offer you all the details needed for your ride, while customizing your bike with a modern look.



PLUG N PLAY
*for Honda Grom



Specifications

- **Speedometer**
R: 0 ~ 124 MPH (0 ~ 199 km/h)
U: 1 MPH or km/h (alternative)
- **Odometer**
R: 0 ~ 99,999 miles (km) | U: 1 mile (km)
- **Tripmeter A/B**
R: 0 ~ 9,999.9 miles (km)
U: 0.1 mile (km)
- **Speeding warning light**
R: 19 ~ 124 MPH (30 ~ 199 km/h)
U: 1 MPH (km/h)
warning light on when \geq setting value
- **Tire circumference**
R: 300 ~ 2,500 mm | U: 1 mm
Sensitive point: 1 ~ 40
- **Sensor points**
R: 1 ~ 40 points
- **Gear indicator (learning)**
R: OFF, highest gear, N and highest gear,
show all (N / 1 ~ 6)
- **Maintenance**
R: 300 ~ 10,000 mile (500 ~ 16,000 km)
U: 100 km (mile)
- **Bar segment tachometer**
R: 0 ~ 10,000 RPM /
0 ~ 13,000 RPM
U: 0 ~ 10,000 RPM (250 RPM/segment)
0 ~ 13,000 RPM (250 RPM/segment)
- **RPM input pulse**
R: POS(+) / NEG(-)
- **RPM signal**
R: P-0.5 / P-1 / P-1.5 / P-2 / P-2.5 /
P-3 / P-4 / P-5 / P-6 / P-9 / P-10 /
P-11 / P-12 / P-17 / P-18 / P-23 / P-24 /
P-34 / P-36
- **First-stage warning for over-RPM (Illuminated)**
R: 0 ~ 10,000 RPM
Setting: 3,000 ~ 9,750 RPM
R: 0 ~ 13,000 RPM
Setting: 3,000 ~ 12,750 RPM
Signaling light on (**green**) for over-RPM
when \geq set value
- **Second-stage warning for over-RPM (Illuminated)**
R: 0 ~ 10,000 RPM
Setting: 3,000 ~ 9,750 RPM
R: 0 ~ 13,000 RPM
Setting: 3,000 ~ 12,750 RPM
Signaling light on (**red**) for over-RPM
when \geq set value
- **Meter weight**
 \pm 200 g
- **Specifications**
JIS D 0203(S2)
- **Third-stage warning for over-RPM (Blinking)**
R: 0 ~ 10,000 RPM
Setting: 3,250 ~ 10,000 RPM
R: 0 ~ 13,000 RPM
Setting: 3,250 ~ 13,000 RPM
Signaling light blinking (**green/red**)
for over-RPM when \geq set value
U: 100 RPM
- **Temperature & Max. temp record**
R:
1- OFF
2- Cylinder head temperature
P-1 -20 ~ 200 °C (-4 ~ 392°F)
P-2 -40 ~ 185 °C (-40 ~ 365°F)
P-3 -20 ~ 220 °C (-4 ~ 428°F)
P-4 -20 ~ 200 °C (-4 ~ 392°F)
P-5 -20 ~ 120 °C (-4 ~ 248°F)
P-6 -30 ~ 200 °C (-22 ~ 392°F)
P-1A -20 ~ 200 °C (-4 ~ 392°F)
P-2A -40 ~ 185 °C (-40 ~ 365°F)
P-5A -20 ~ 120 °C (-4 ~ 248°F)
P-6A -30 ~ 200 °C (-22 ~ 392°F)
3- Temperature sensor
P-250 0 ~ 250 °C (32 ~ 482°F)
- **Thermometer**
R: 32.0 ~ 482.0 °F (0 ~ 250 °C)
U: 0.1 °C (°F)
- **Over Temperature warning**
R: 122 ~ 356°F (50 ~ 180°C) | U: 3°F (5°C)
Temp warning on when $>$ value
- **Fuel meter**
R: OFF, 100 Ω , 250 Ω , 270 Ω , 390 Ω ,
510 Ω , 1200 Ω , fuel switch, USER
- **Low fuel warning**
R: 0 ~ 3 segment | U: 1 segment
low fuel warning will be blinking \geq value
- **Clock** R: 1:00 ~ 12:59 (12H)
- **Voltmeter**
R: DC 8.0 ~ 18.0 V | U: DC 0.1 V
- **Low voltage warning**
R: DC 8.0 ~ 13.0 V | U: 0.1
Signaling light on \geq value
- **Backlight brightness**
R: 1/5(Darkest) ~ 5/5(Brightest) | U: 1/5
- **ABS** R: ON / OFF
- **AFR**
R: ON / OFF
R: 12.1 ~ 17.5 | U: 0.1
- **Indicator lights**
Neutral / High beam / Turn signals /
Check engine / ABS / Warning
- **Effective temperature range**
14 ~ 140 °F (-10 ~ 60 °C)
- **Effective voltage**
DC 12 V

RX-3

part

BA071000



warning

Night mode

TFT multifunction meter

The RX-3 TFT multifunction meter is the newest addition to our RX series of gauges. It features a modern TFT screen to display your information with the day and night brightness adjustability and also has 5 different colors to choose from. Compact, lightweight and easy to operate, this modern meter offers a clean and simple design.

This universal gauge can be used for any application and also features a **plug and play connector** available for the **Honda Grom®** and the **Honda Monkey®**.



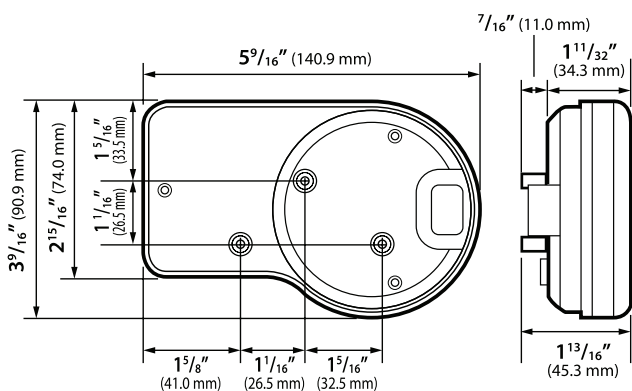
Optional plug and play harness

BZ001000
for Honda Grom®
(2013-2021)

BZ001001
for Honda Monkey®
(2013-2021)



PLUG N PLAY



(R = Range U= Unit)

Specifications

- **Speedometer**
R: 0 ~ 225 MPH (0 ~ 360 km/h)
U: 1 MPH or km/h (alternative)
- **Odometer**
R: 0 ~ 99,999 miles (km) | U: 1 mile (km)
- **Tripmeter A/B**
R: 0 ~ 9,999.9 miles (km)
U: 0.1 mile (km)
- **Oil maintenance**
R: 300~10,000 miles
(500 ~ 16,000 km),OFF
U: 100 km(miles)
- **Speeding warning light**
R: 20 ~ 225 MPH (30 ~ 360 km/h)
U: 1 MPH (km/h)
- **Top speed record**
R: 0 ~ 225 MPH (0 ~ 360 km/h)
- **Tire circumference**
R: 300 ~ 2,500 mm | U: 1 mm
Sensitive point: 1 ~ 40
- **Gear indicator (learning)**
R: -, N, 1 ~ the highest gear
- **Max. Gear record**
R: -, N, 1 ~ the highest gear
- **Tachometer**
R: 0~15,000 RPM
- **RPM shift-light**
R: 1,000 ~ 15,000 RPM | U: 100 RPM
display light: steady, fast flash
- **Max. RPM**
R: 0 ~ 15,000 RPM
- **RPM input signal number setting**
0.5, 1.0 ~ 24.0
- **RPM input pulse**
R: Low-Act, High-Ac
- **Thermometer**
R: 32.0 ~ 482.0 °F (0 ~ 250 °C)
U: 0.1 °C (°F)
- **Over Temperature warning**
R: 140 ~ 482°F (60 ~ 250°C) | U: 1°F (°C)
- **A/F ratio meter**
R: 12.1 ~ 17.5 | U: 0.1
- **Fuel meter**
R: 6 levels | U: 1 level = 16.6 %
- **Fuel resistance**
R: OFF, 100 Ω, 250 Ω, 270 Ω, 510 Ω,
1200 Ω, 5W, learning mode, OFF
- **Low fuel warning**
R: 0 ~ 3/6 | U: 1
- **Clock**
R: 24 H / 12 H format
- **Voltmeter**
R: DC 8.0 ~ 18.0 V | U: DC 0.1 V
- **Low voltage warning**
R: DC 8.0 ~ 13.0 V | U: 0.1
- **High voltage warning**
R: DC 13.1 ~ 18.0 V | U: 0.1
- **Target speed**
D: 20 ~ 225 MPH
(30 ~ 360 km/h)
R: 5 MPH (km/h)
- **Target distance**
D: 1/32 ~ 30/32 mile
(50 ~ 1,500 m)
U: 1/32 mile (50 m)
- **Top speed**
R: Speed : 0 ~ 360 km/h
(0 ~ 225 MPH)
Distance : 0 ~ 999 m
(0~3,280 feet)
RPM : 0 ~ 15,000 RPM
Time : 0 ~ 9 : 59"99
- **Background display**
R: Auto (switch according to the ambient
light: Day mode / Night mode.)
- **Backlight brightness (Day)**
R: 3/5~ 5/5(Brightest) | U: 1/5
- **Backlight brightness (Night)**
R: 1/5(Darkest) ~ 5/5(Brightest) | U: 1/5
- **Backlight colors**
R: white, red, orange,green,blue
- **Indicator lights**
Neutral / High beam / Turn signals /
Check engine / Oil level / ABS / Warning /
RPM shift light
- **Effective temperature range**
14 ~ 140 °F (-10 ~ 60 °C)
- **Effective voltage**
DC 12 V



DB-03R

part

BA038900

Fits Honda Grom® 2013-2021

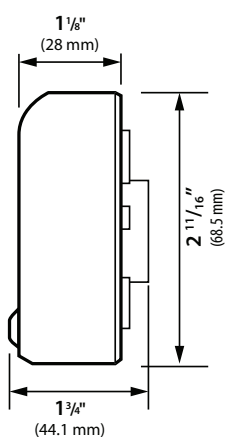
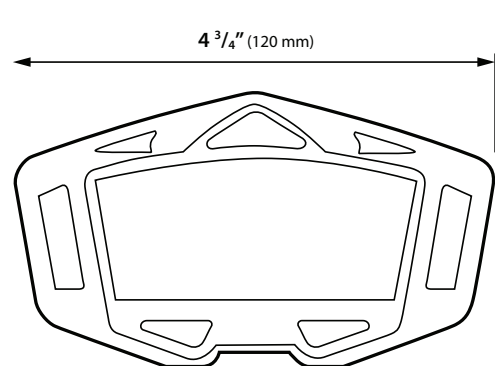
Multifunction meter

The DB-03R is a multifunction meter with a modern casing that provides necessary critical readings. The DB-03r features all standard indicators needed to operate a vehicle on the street as well as 3 adjustable RPM/TACH scales to choose from in the settings. The DB-03R also features a three color changeable backlight.

Other functions include: Speedometer, odometer, trip, temperature, voltage and fuel level. This meter is a direct **plug and play** for the **Honda Grom®**.



PLUG N PLAY



(R = Range U= Unit)

Specifications

- **Speedometer**
R: 0 ~ 225 MPH (0 ~ 360 km/h)
U: MPH or km/h
- **Odometer**
R: 0 ~ 99,999 miles (km) | U: 1 mile (km)
- **Tripmeter A/B**
R: 0 ~ 999.9 miles (km) | U: 0.1 mile (km)
- **Total hour meter**
R: 0 ~ 99,999 H | U: 1 H
- **Hour meter A/B**
R: 0 ~ 999.9 H | Unit: 0.1 H
- **Tire circumference**
R: 300 ~ 2,500 mm | U: 1 mm
Sensitive point: 1 ~ 20
- **Tachometer R:**
10,000 RPM (1 level = 166 RPM)
12,000 RPM (1 level = 200 RPM)
15,000 RPM (1 level = 250 RPM)
- **RPM warning / shift-light**
R: 1,000 ~ 15,000 RPM | U: 100 RPM
- **Warning**
Light on (F-OFF) | Flash (F-ON)
- **Maximum RPM record**
R: 0 ~ 10,000 / 12,000 / 15,000 RPM
- **RPM input signal number setting**
R: 0.5, 1 ~ 24
- **RPM input pulse**
R: HI-ACT (positive wave pulse)
LO-ACT (negative wave pulse)
- **Volt meter**
R: DC 8 ~ 18 V
Flashing warning when voltage is lower than DC 11.5 V or higher than DC 15.5 V
- **Thermometer**
R: 32 ~ 482 °F (0 ~ 250 °C)
U: 0.1 °F or °C (alternative)
- **Over temperature warning**
R: 140 ~ 482°F (60 ~ 250°C) | U: 1°F (°C)
- **Top temperature record**
R: 0 ~ 482°F (250°C)
- **Fuel meter**
R: 6 levels | U: 1 level = 16.6 %
- **Fuel resistance**
R: 100 Ω / 250 Ω / 510 Ω / 1,200 Ω / SW
- **Clock R:** 24 H format
- **Backlight brightness**
R: 1/5 (darkest) ~ 5/5 (brightest)
- **Backlight colors**
Blue / Orange / Purple
- **Indicator lights**
Neutral / High beam / Turn signals/
Check engine Oil level / Temperature /
Speeding / RPM shift light
- **Gear indicator**
R: N, 1, 2, 3, 4, 5, 6, 7, 8, 9
- **Effective temperature range**
14 ~ 140 °F (-10 ~ 60 °C)
- **Effective voltage** DC 12 V
- **Sensor included**
Passive speed sensor: BF019J06
Temperature sensor: BF030000
- **fits Grom® only**



(R = Range U= Unit)

Specifications

- **Speedometer**
R: 0 ~ 225 MPH (0 ~ 360 km/h)
U: 1 MPH or km/h (alternative)
- **Odometer**
R: 0 ~ 99,999 miles (km) | U: 1 mile (km)
- **Tripmeter A/B**
R: 0 ~ 9,999.9 miles (km)
U: 0.1 mile (km)
- **Oil maintenance**
R: 312~10,000 miles
(500 ~ 16,000 km), OFF
U: 100 km (miles)
- **Speeding warning light**
R: 0 ~ 56 MPH (0 ~ 90 km/h)
U: 1 MPH (km/h)
- **Top speed record (MAX)**
R: 0 ~ 225 MPH (0 ~ 360 km/h)
- **Tire circumference**
R: 300 ~ 2,500 mm | U: 1 mm
Sensitive point: 1 ~ 60
- **Gear indicator** R: -, N, 1 ~ 6,
- **Digital Tachometer**
R: 0 ~ 20,000 RPM | U: 100 RPM
- **Level Tachometer**
R: 0 ~ 9,000 - 12,000 - 15,000 - 18,000,
20,000 RPM
- **RPM shift-light** R: 3,000 ~ 20,000 RPM
- **Max. RPM record**
R: 0 ~ 20,000 RPM
- **RPM input (for fuel injection)**
0.5, 1.0 ~ 24.0
- **Thermometer**
R: 32.0 ~ 482.0 °F (0 ~ 250 °C)
U: 0.1 °C (°F)
- **Temperature warning**
R: 122 ~ 482°F (50 ~ 250°C) | U: 1°F (°C)
- **Top Temperature (MAX)**
R: 32.0 ~ 482.0 °F (0 ~ 250 °C)
- **Fuel meter** R: 6 levels | U: 1 level = 16.6 %
- **A/F ratio meter** R: 12.1 ~ 16.8 | U: 1 level = 0.1
- **Fuel level** R: 6 levels | U: 1 level = 16.6%
- **Fuel resistance**
R: 100 Ω, 250 Ω, 510 Ω, 1200 Ω,
SW, learning mode
- **Low fuel warning**
R: 0 ~ 3/6 | U: 1
flashing light when lower than setting value
- **ABS indicator** R: on/off
- **Clock** R: 24 H format
- **Digital Voltmeter**
R: DC 8.0 ~ 18.0 V | U: DC 0.1 V
- **Target speed timer**
D: 20 ~ 225 MPH (30 ~ 360 km/h)
R: 5 MPH (km/h)
- **Target distance timer**
D: 1/32 ~ 30/32 mile (50 ~ 1,500 m)
U: 1/32 mile (50 m)
- **Top speed timer**
R: Speed : 0 ~ 225 MPH (0 ~ 360 km/h)
Distance : 0 ~ 3,280 feet (0 ~ 999 m)
RPM : 0 ~ 20,000 RPM
Time : 0 ~ 9 : 59"99
- **Display & Backlight
(positive and negative display of the
main screen)**
R: Time setting switchover (nighttime
function is turned off when the before
and after time are the same)
- **Liquid Crystal Concentration**
R: 1/3(Darkest) ~ 3/3(Brightest)
- **Backlight brightness**
R: 1/5(Darkest) ~ 5/5(Brightest)
Separate setting for daytime and nighttime
- **Brightness (LED Bar)**
R: 1/5(Darkest) ~ 5/5(Brightest)
Separate setting for daytime and nighttime
- **Backlight colors**
R: white / green / light blue / blue / purple /
red / orange / yellow
- **Indicator lights**
Neutral / High beam / Turn signals /
Check engine / Oil level / ABS / IMMO /
- **Effective temperature range**
14 ~ 140 °F (-10 ~ 60 °C)
- **Effective voltage** DC 12 V



same colors
also available in
negative display



Mini 3

part

BA003245

Cylinder head temperature
meter for Honda Grom®
2013-2021

BA003214

Air/fuel ratio meter for
Honda Grom® 2013-2021

Mini 3 air/fuel ratio & temperature meters

The Mini 3 series has been developed with the best components and latest technology. Compact, lightweight and easy to connect, the Mini 3 meters are a must have.

These meters are a direct **plug and play** for the **Honda Grom®**.



PLUG N PLAY

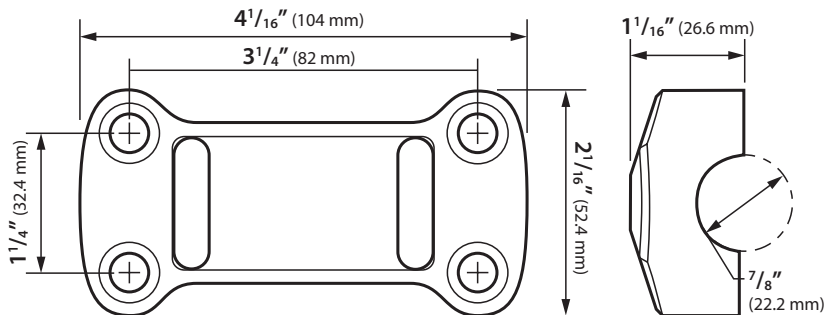
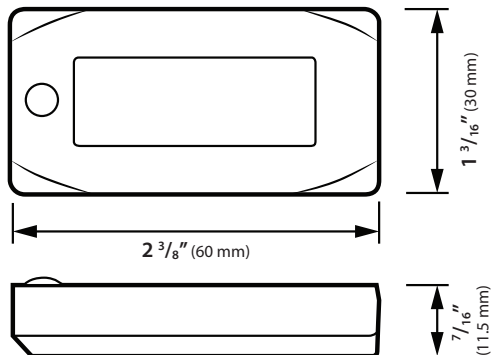
(R = Range U= Unit)

Specifications

Effective temperature range
14 ~ 140 °F (-10 ~ 60 °C)

Power DC 12V

Actual size



■ Air/fuel ratio meter

Our Mini 3 air/fuel ratio meter was especially designed to help you tune your carbureted or fuel injected engine. This meter can be easily installed on any type of 4 stroke engine by installing the sensor in the exhaust system and connecting the instrument to a DC 12 V source of power.



Specifications

- Air/fuel ratio meter
R: 12.2 ~ 17.2 | U: 0.1
- Display
L: if A/F > 17.2 | A: if A/F < 12.2
- *fits Grom® only



■ Cylinder head temp.

This compact and lightweight Mini 3 engine temperature meter is especially designed for Honda Grom®. This meter is the perfect addition to monitor your ride, it's peak recall function allows you to see the maximum temperature reached.



Specifications

- Temperature & Max temp record
R:
t-1: -4 ~ 392 °F (-20 ~ 200 °C)
t-2: -40 ~ 365 °F (-40 ~ 185 °C)
t-3: -4 ~ 428 °F (-20 ~ 220 °C)
t-4: -4 ~ 392 °F (-20 ~ 200 °C)
t-5: -4 ~ 248 °F (-20 ~ 120 °C)
U: 0.1 °F or °C (alternative)
- *fits Grom® only

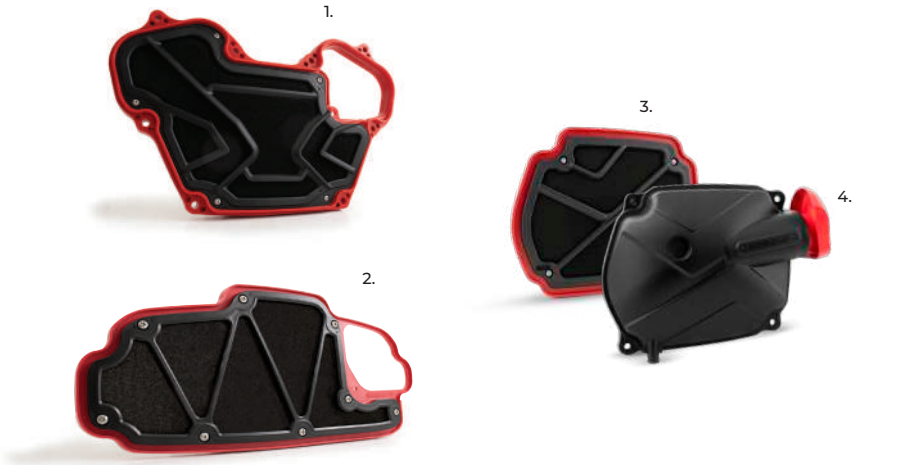




Hurricane Air Filter

Hurricane racing air filter for Honda Grom® / Honda Monkey®

Want better performance with a simple change? Using the Hurricane multi air filter intake will increase the airflow, improve filtering efficiency and raise the engine output performance. This high-quality foam filter is easy to assemble and disassemble and suitable for long-term use with repetitive cleaning.



new

Air filters

part

DK623000

Honda Grom® 2013-2021 (1.)

DK633000

Honda Monkey® 2013-2021 (2.)

DK640000

Honda Grom® (2022+) (3.)

DL640000

Air Filter cover with rubber intake for Honda Grom® (2022+) (4.)

Connecting tube & rubber intake

part

DM623000

Connecting tube for Honda Grom® (2013-2021) (5.)

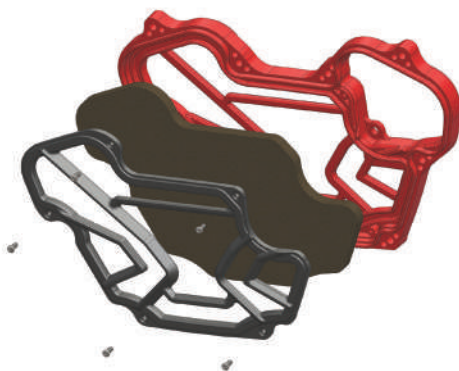
DM623K10

Rubber intake tube for Honda Grom® (2013-2021) (6.)

DM640000

Connecting tube for Honda Grom® (2022+) (7.)

new



Ignition Coil

new

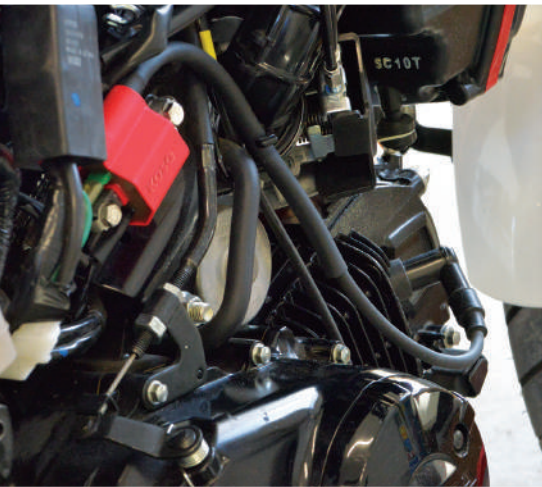
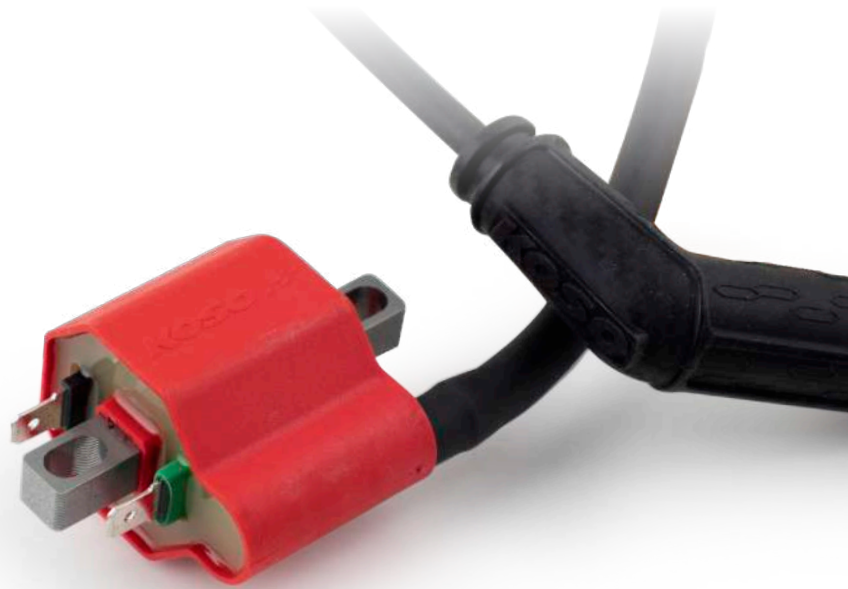
part

KU640000

Fits Honda Grom®/Monkey®
2022+

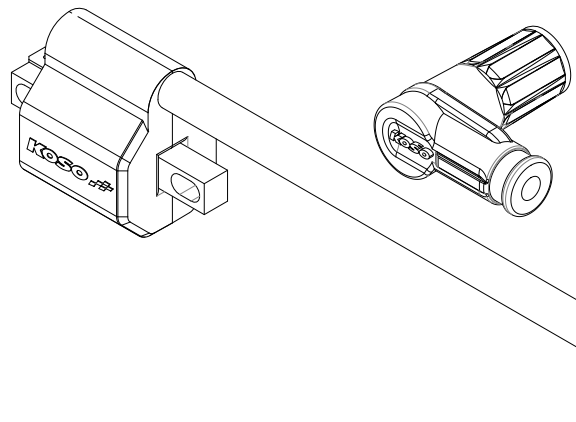
Ignition Coil for Honda Grom® / Monkey®

Koso's high performance ignition coils are designed using the most advanced materials on the market today. Providing a stronger spark and more horsepower, the Koso ignition coil also provides smoother idling and acceleration.



Specifications

- High power ignition coil
- Built using high quality materials
- Direct fit For Grom® & Monkey® 2022+



Throttle body

The throttle body and intake manifold are used to control the amount of air flowing to the engine's combustion chamber. They are important elements of the admission system. It will allow a better air/fuel mixtures for a quicker throttle response.

Specifications

- 34mm
- High quality material
- fits Grom® and Monkey®



1.

Specifications

- 28mm
- High quality material
- fits Grom® and Monkey®



2.

Throttle brass air screw

Replace the stock air screw on your throttle body with this high precision brass model. Made 100% from brass, it is the perfect replacement for the plastic version from the manufacturer.

Specifications

- 100% made of brass
- Fits Honda Grom® & Honda Monkey stock throttle body
- Fits Koso performance throttle body for Honda Grom® & Honda Monkey
- 9.5 x L40.8mm



Throttle body

part

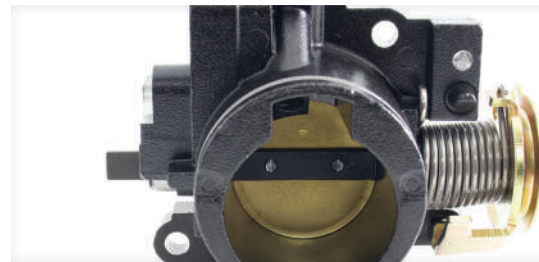
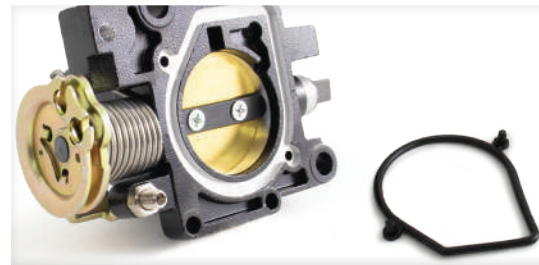
DY623013

throttle body for Honda Grom®/Monkey® 2013-2021 (1.)

DY640000

throttle body for Honda Grom®/Monkey® 2022+ (2.)

new



Brass air screw

part

BS000010

throttle body air screw for Honda Grom®/Monkey® 2013-2021

** OEM plastic screw



Intake manifold

part

DP623001

intake manifold for Honda Grom®/Monkey® 2013-2021 (1.)

DP623K000E

replacement paper gaskets

*Sold individually

for Honda Grom®/Monkey® 2013-2021 (2.)

DP640000

intake manifold for Honda Grom®/Monkey® 2022+ (3.)

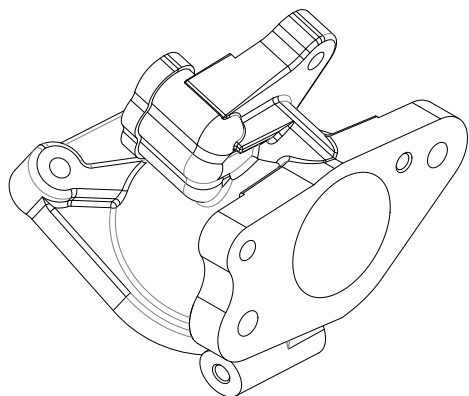
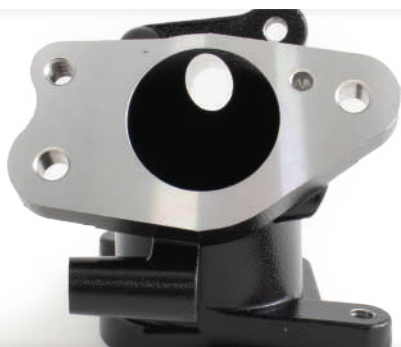
new

Performance intake manifold

The throttle body and intake manifold are used to control the amount of air flowing to the engine's combustion chamber, they are important elements of the admission system. Using our Koso's 34 mm throttle body in conjunction with our 30.5 to 34mm intake manifold will allow a better air/fuel mixtures for a quicker throttle response.



* Replacement paper gaskets sold individually



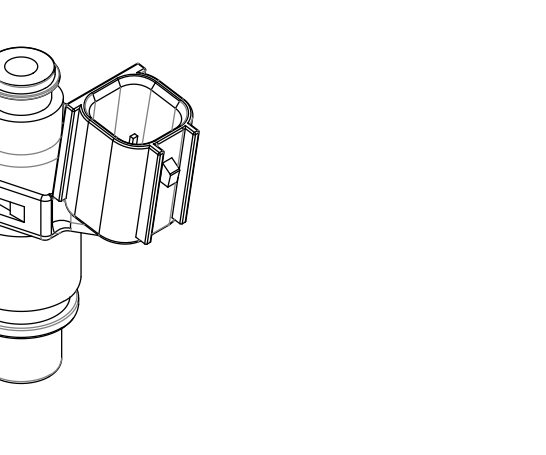
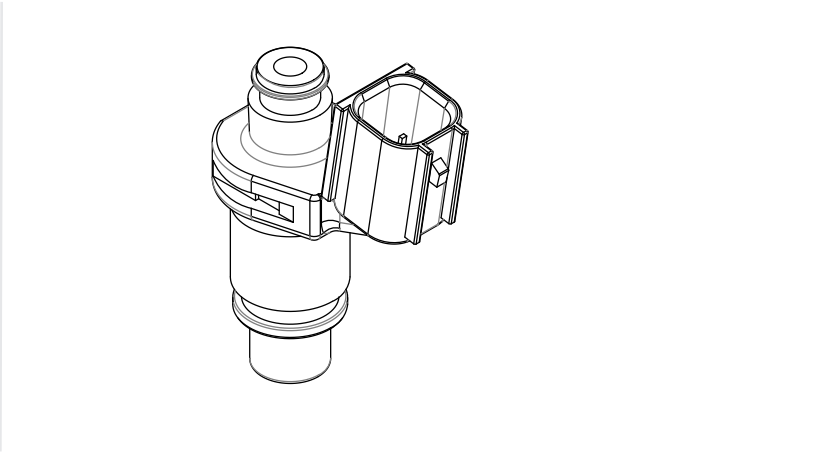
Injector

High flow injector & injector adaptor

Your need for speed pushed you to install our 150cc or 170cc Big Bore kit and 4 valves head? Unleash the full power of that transformation by using our high-flow injectors. A small upgrade for better performance!



*This part does not require an injector adapter



Camshaft

part

MM623002

for Honda Grom®/Monkey®
2013-2021 (1.)

MM640000

for Honda Grom®/Monkey®
2022+ (2.)

new

Performance camshaft

The new Koso performance camshaft for Honda Grom 2022+ will give you great results at high RPM. This camshaft can be used with a stock engine, but will even give better results with the Koso 150cc big bore kit.

Made from quality material for longer durability, the Koso GROM camshaft is a clever choice.

Specifications

- Duration at 1mm
In: 260 Ex: 265
- Valve lift
In: 8.5mm Ex: 8.5mm
- Running clearance
In: 0.10mm Ex: 0.17mm
- fits Grom® and Monkey®

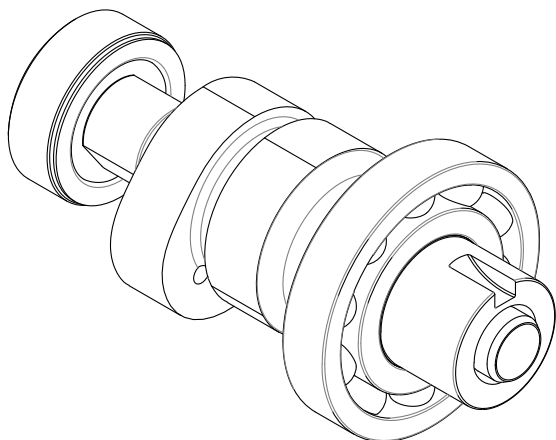
1.



Specifications

- Duration at 1mm
In: 230 Ex: 230
- Valve lift
In: 0.8mm Ex: 7.5mm
- Running clearance
In: 0.08mm Ex: 0.20mm
- Lobe center
In: 105 Ex: 105
- fits Grom® and Monkey®

2.



Oil pump

High-flow oil pump

Our Koso's High-flow oil pump for Honda Grom® is strongly recommended for those who upgraded their engine with our 170cc Big Bore kit and 4v Cylinder head. The addition of this high quality part will increase the oil flow by 40%; which is a very effective modification that will help prevent engine failure.

Keeping the engine lubricated and cool is very important; whether you ride for fun or for races.

part

NF623000

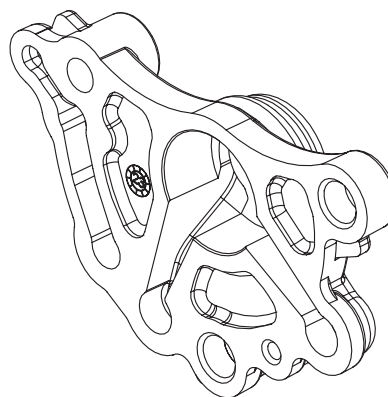
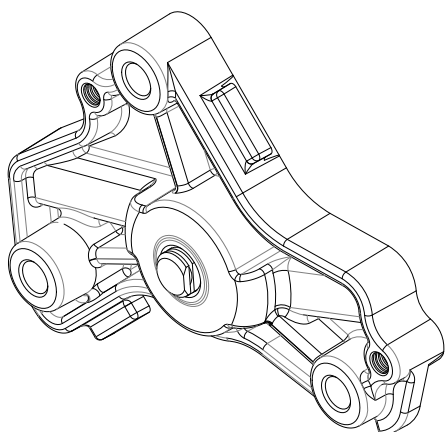
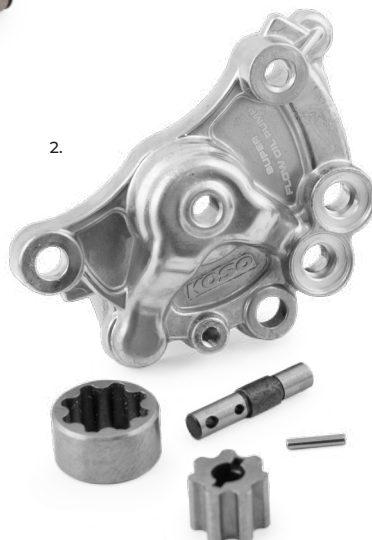
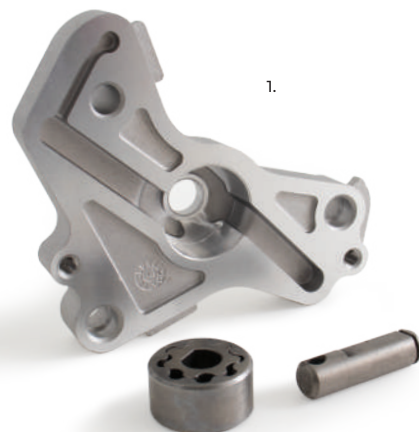
for Honda Grom®/Monkey®
2013-2021 (1.)

NF640000

for Honda Grom® 2022+ (2.)

- fit Grom® and Monkey®
- 40% oil flow increase

new



Clutch kit

part

FA623002 (1.)

full kit

- fits Grom® and Monkey® 2013+
- includes 6 hi-tension clutch springs
- includes hi-performance clutch discs & clutch plates

High-performance clutch kit

When time comes to transfer the power of your engine to the ground, the clutch components are one of the important keys. Using our high-tension clutch springs along with the high-performance clutch discs will help improve the axial force and reduce the risk of clutch slipping.



High-tension clutch springs

Your clutch springs may be the weak spot in the powertrain. These springs are 60% stiffer than the stock ones and are intended as a direct replacement. The springs will offer stronger grip of the clutch system when shifting gears. They are sold as a six pieces kit.



Clutch springs

part

FT623001

Springs only 2.)

- fits Grom® and Monkey® 2013+
- replacement parts for the Koso Clutch kit*

Clutch enhanced lifter plate

The main difference between our Koso clutch enhanced lifter plate and the stock one is strength. Our CNC lifter plate is stronger to provide better durability and stability to the clutch during replacement, installation and shifting gears during high speed movement.



Clutch lifter plate

part

FA623K00

- fits Grom® and Monkey® (3.) 2013-2021

FA640000

- fits Grom® and Monkey® (4.) 2022+

new

Cam chain tensioner

part

MU623100

with bearing

Fits 2014 to 2021 models (1.)

MU640000

Fits 2022+ models (2.)

new

Cam chain tensioner

Made from resistant high-quality material, our Koso chain tensioner could save your engine from expensive damage. We came up with this long lasting solution to replace the OEM chain tensioner which has a tendency to wear prematurely.



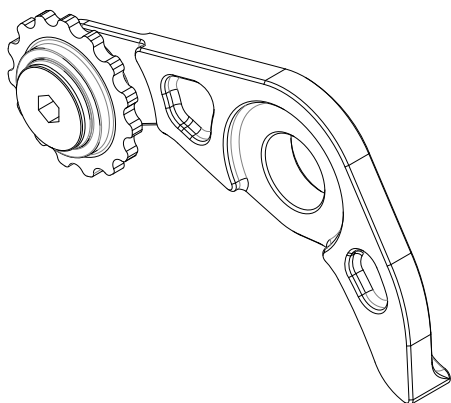
(R = Range U= Unit)

Specifications (2014-2021)

- The arm is made with Aluminum 6061, and the wheel is made with JIS SCM415 (=SAE 4115) Alloy Structure Steel (Chromium Molybdenum Steel).
- Works on stock engine and highly recommended to use with our Big Bore & 4V Head kit.

Specifications (2022+)

- The arm is made with Aluminum 6061, and the wheel is made with JIS SCM415 (=SAE 4115) Alloy Structure Steel (Chromium Molybdenum Steel).
- Works on stock engine



new

Big bore kit

Big bore kit for Honda® Grom / Honda® Monkey

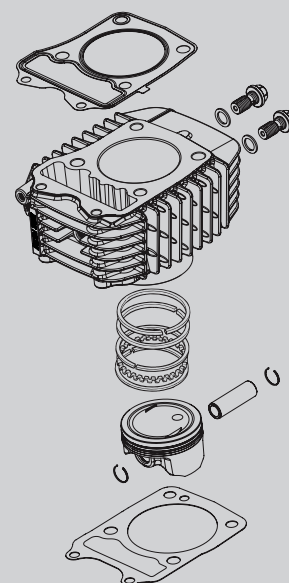
Made from the best components available on the market, our 150cc Big Bore kit is the perfect addition to upgrade your performance! The kit includes a black powder coated cylinder, 54 mm forged piston, rings, pin and gasket kit. Its compression ratio of 11.38 to 1 will allow you to still use premium pump gas and keep the reliability of a stock motor.



(R = Range U= Unit)

Specifications (150cc)

- Cylinder displacement: 149cc
- Cylinder material: Aluminum / Black powder coated
- Piston size: 54mm
- Piston type: Forged
- Compression ratio: 11.38 : 1
- Kit includes piston, rings, pin, pin clips, gasket kit and cylinder



Piston ring kit (see at page 28)



4V Head

part

MC623000

Honda Grom®/Monkey®
Fits 2013 to 2021

4V head kit for Honda Grom® / Monkey®

Our Koso 4V Head Kit is the ideal engine part to complete the Koso Honda Grom® Big Bore kit. Because of its unique 4 valve design, the air flow and performance are increased. This new designed head is the perfect addition for those who desire more power and torque.

The 4 Valve Head Kit features a forged piston, stainless steel 24 mm intake valves and 20 mm exhaust valves.

*** Only fits Koso 170cc big bore kit**



(R = Range U= Unit)

Specifications

- Cylinder height: 64.2 mm
- Gasket thickness:
Upper: 0.25 mm | Bottom: 0.5 mm
- Piston compression height:
19.5 mm
- Volume: 169.21cc
- Squish: 1mm
- Cylinder head titration: 13.4 cc
- Compression ratio: 12.3 : 1
- Valve / Tappet clearance:
IN: 0.10 mm EX: 0.17 mm
- Camshaft: Torque: 1.71 Hp: 26.26
**measured without air filter & no noise reduction plug*
- ****Requires the use of Iridium spark plug: NGK-ER9EHX (part NGK-ER9EH) or Denso # IY27, IY29 or IY31**

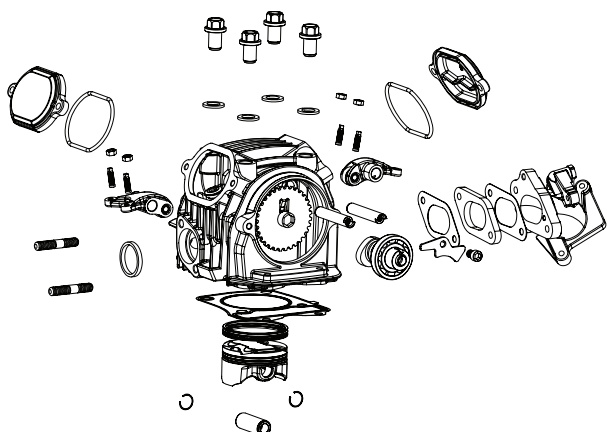




photo by Heang Nguyen



Complete kit

part

MB623003

Complete kit (1.)

Fits 2013 to 2021

Replacement parts

XT623MM101

4V camshaft (2.)

MD623010

4V forged piston (3.)

XT623MT101

Exhaust rocker arm (4.)

XT623MT001

Intake rocker arm (5.)

MQ623E205E

Exhaust valve (6.)

MQ623E005E

Intake valve (7.)

DP623K500E

Thermal insulation gasket (8.)

DP623K300E

Manifold gasket (oval) (9.)

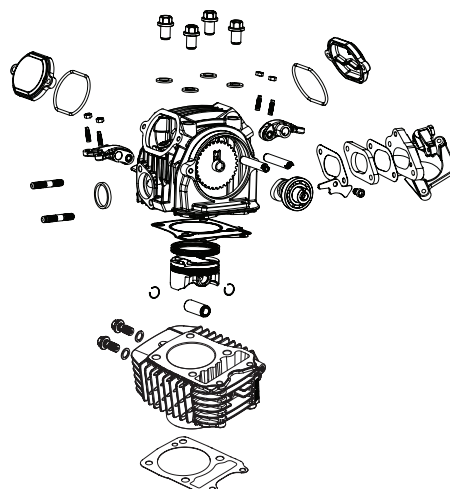
MC623K000E

Exhaust gasket (10.)

170cc big bore kit & 4V head kit

This complete top-kit is the perfect add-on for all horsepower enthusiast looking for performance ! It includes : a 170cc ceramic coated cylinder, forged piston, performance camshaft, bearing, rocker arms, 4 valve cylinder head, intake manifold, gaskets, and more.

All parts are made from high-quality components for reliability and durability that allow you to put your mind at ease and ride with confidence !





7.



9.



5.

10.



2V piston

part

MD623000 (1.)

full kit

Fits 2013-2021 models

- fits Grom® and Monkey®
- includes pistons rings and C clips
- for 2V head only
- replacement for 170cc
BIG BORE KIT only

Replacement parts

ME000G6100

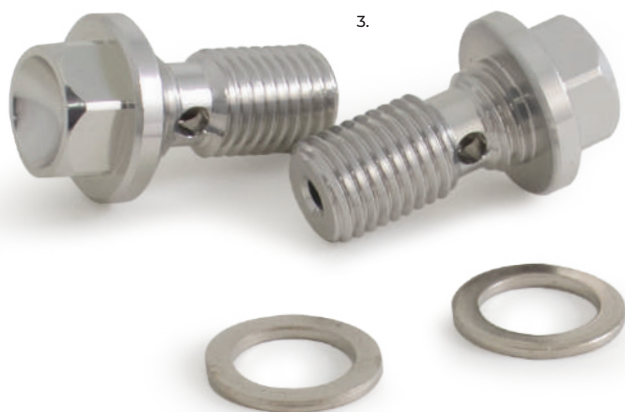
Piston ring kit (2.)

*Not sold individually

2V piston kit for big bore kit



Banjo bolt for big bore kit



Banjo bolt

part

MO623100 (3.)

Fits 2013-2021 models

- fits Grom® and Monkey®
- sold as pair
- for 2V head only
- replacement for 170cc BIG BORE KIT only

Upper & lower gasket for big bore kit



Upper & lower gasket

part

MA623100 (4.)

Fits 2013-2021 models

- fits Grom® and Monkey®
- for 2V head only
- replacement for 170cc BIG BORE KIT only

Cyclone

part

HE049101

Smoke

new

Specifications

- Sequential indicator (multi-LED)
- Amber LED
- Available in smoke lens
- Single function
- Soft control
- M8 threading
- Sold as pair



GW-02

part

HE044000

Smoke

Specifications

- Dynamic (sequential) indicator
- 5 high power ultra-bright LED lights
- Aluminium shell
- Smoke lens
- Soft stem design
- M8 threading
- Sold as pair



Electro

part

HE037021

Amber

HE037011

Smoke

Specifications

- 5 high power ultra-bright LED lights
- Aluminium shell
- Available in clear or amber lens
- Soft stem design
- M8 threading
- Sold as pair



Regardless of whether its day or night, the new Cyclone sequential LED indicator lights will keep you safe and more visible when changing lanes. Sold as a pair, its 10 high powered LED's and classical round shape will provide you the security needed while customizing your motorcycle.

The Koso new GW-02 sequential LED indicator gives any bike a style statement. The sequential indicator powered by five high powered LED's provides modern style as well as blinding brightness to keep you safe on the road regardless of whether its day or night.

The Koso Electro sequential LED indicator is a great addition to any bike regardless of the make or style. The sequential indicator powered by five high powered LED's provides modern style as well as blinding brightness to keep you safe on the road regardless of whether its day or night.

This kit allows you to conveniently install any of our LED indicator lights to your Grom. Sold as a pair, they fit front or back (2 pairs required if you change all 4 flashers)



Indicator light adaptor kit

part

BO623K02

indicator light adaptor kit

Spark plug

part

NGK-ER9EH

This spark plug is the best one to fit your newly modified Honda Grom® or Honda Monkey® with the Koso 170cc big bore kit. It is designed to give you a more powerful spark and enhance your bike performance.



Index

1 Meters & Performance

MS-01 for Honda Grom®	2
RX-3	4
RX-3 Plug & play harness	4
DB-03R	6
RS-2	8
Mini3	10
NEW Hurricane Air Filter	13
NEW Ignition coil	14
NEW Throttle body	15
Brass air screw	15
NEW Intake manifold	16
NEW Injector	17
NEW Camshaft	18
NEW Oil pump	19
Clutch kit	20
Clutch springs	21
NEW Clutch lifter plate	21
NEW Cam chain tensioner	22
NEW Big bore kit	23
4V Head	24
Complete Kit	26
2V piston	28
Banjo bolt	29
Upper & lower gasket	29
Cyclone	30
GW-02	30
Electro	30
Indicator light adaptor kit	31
Spark plug	31





KOSO 
NORTH AMERICA

Visit our website to view over 300 great products and accessories and/or sign up for our Newsletter to get exclusive updates and new release.

www.kosonorthamerica.com



Contact Us

Order : 1 877 777-0604

Tech. : 450 359-0604

Fax : 450 359-0849

Email : info@koso-na.com



PRINTED IN CANADA

