



Thank you for purchasing our product. Before installing/operating the product, read the instructions carefully and retain them for future reference.

⚠ Attention!

- For installation, follow the steps described. Any damage caused by wrong installation shall be imputed to the users.
- To avoid a short circuit from occurring do not pull or modify the wires during installation.
- Do not disassemble or change any parts. Opening and disassembling this unit will void any warranty.
- Maintenance and repairs should be executed by our professionals only.

Symbol description:

NOTE

⚠ Some procedures must be followed to avoid damages to the product.

⚠ **WARNING!** Certain procedure must be followed to avoid damages to yourself, to the vehicle or to others.



Flash



Light on



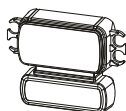
Hold the
Button
1 second



Hold the
Button
3 seconds

1-1 Accessories

1 LCD Meter X1



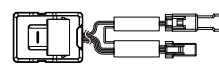
2 Fuel Level Meter X1



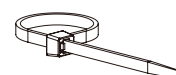
3 Engine temp. Meter X1



4 Meter adapter box X1

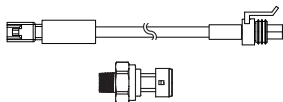


5 Zip tie (4.6x300 mm) X1

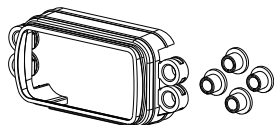


1-2 Optional accessories

1 Air pressure sensor kit 71" x1 (part# BZ012000)



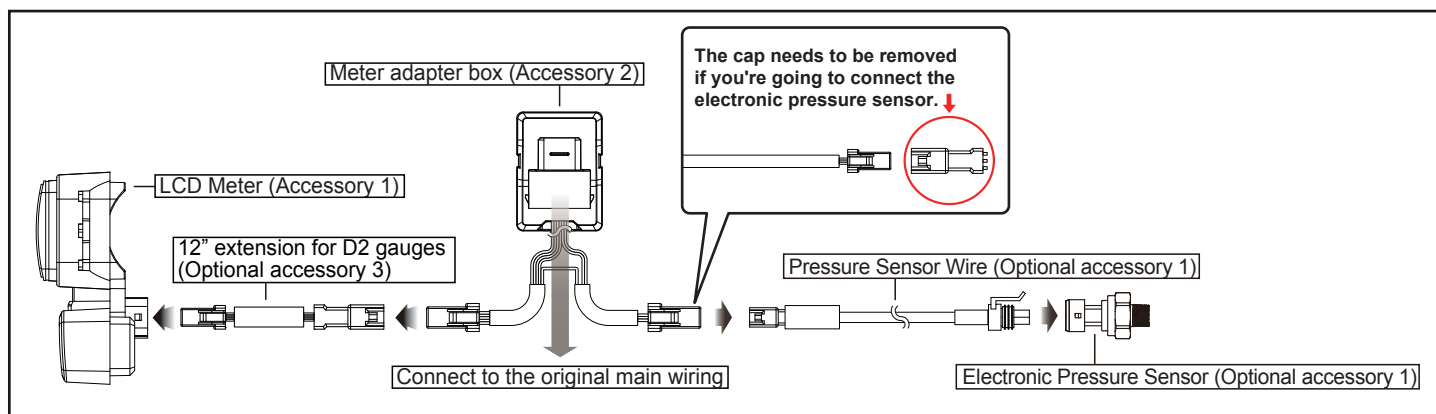
2 D2 rubber gasket with bushings x1 (part# BZ080000)



3 12" extension for D2 gauges x1 (part# 20-A91803A)



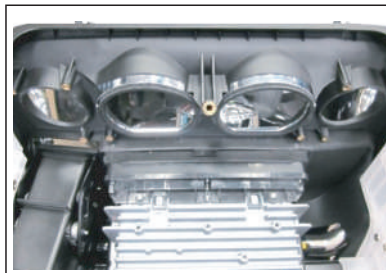
2-1 Wiring installation instructions



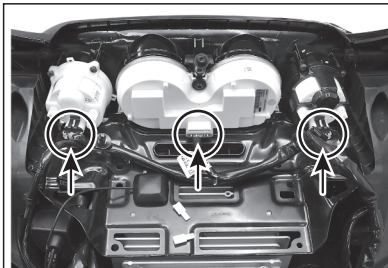
2-2 Disassembling Instructions



1. Disconnect the ground (-) (negative pole of the battery) from the vehicle's battery.
2. Remove the mounting screw and remove the fairing.



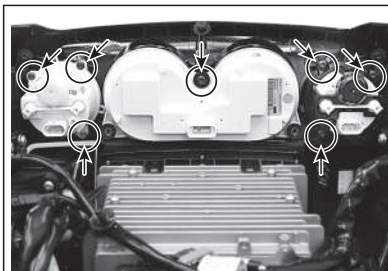
5. Ensure the Speed and Tach bezels remain in the fairing.



3. Disconnect the 3 gauges.



6. The Fuel and Volt bezels and mounting cups will be reused. There are 3 tabs on the bezels that need to be carefully pushed back through the mounting cup to separate the bezel from the mounting cup and to release the factory gauge.

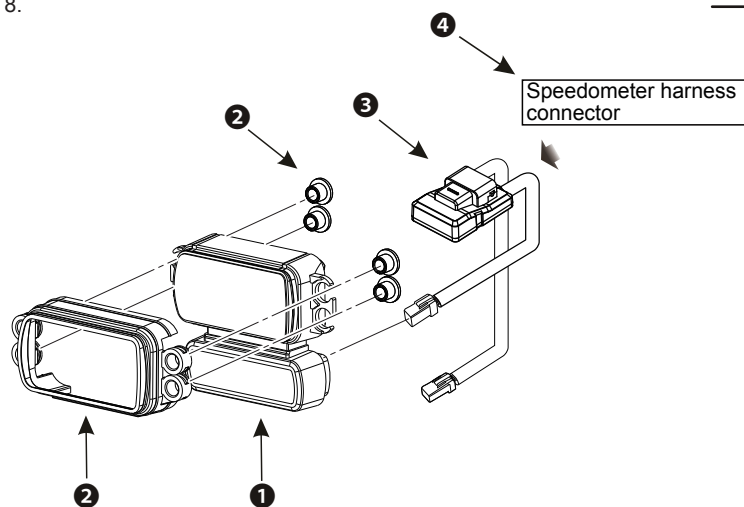


4. Remove the remaining 7 screws.



7. The new Engine temp. gauge will use the existing white Volt mounting cup and the new Fuel Level gauge will use the existing black Fuel mounting cup. Place the new Volt and Engine temp. gauge in the appropriate housings and secure the bezel in place by lining up the tabs.

8.



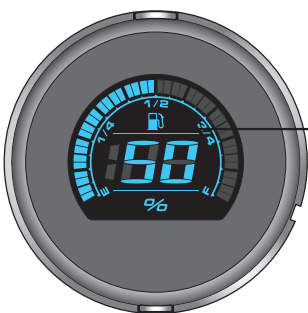
- ① LCD Meter (Accessory 1)
- ② D2 rubber gasket with bushings (Optional accessory 2)
- ③ Meter adapter box (Accessory 2)
- ④ Speedometer harness connector
-(from original supplier)

NOTE Use the zip tie (Accessory 3) to fix the meter adapter box in place.

NOTE Installation may require rubber gasket with bushings (Optional accessory 2)

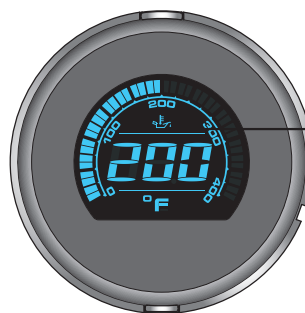
*To access settings on CVO models, you must turn ON the run/stop switch so that the bike will not turn off. Then you can make your adjustments to the settings on the gauge.

3-1 Overview



Fuel meter

- Display range : 0 ~ 100 %
- Display unit : 1 %



Engine temp. meter

- Display range : 0 ~ 400 °F (32 ~ 248 °C)
- Display range : 1 °F (1 °C)

Engine temp.

- Display range : -40 ~ 300 °C (-40 ~ 572 °F)

NOTE It will switch to engine temperature if the temperature sensor is not installed.

Tachometer

- Display range : 0 ~ 10,000 RPM

Speedometer

- Display range : 0~199 km/h(0~124 MPH)
- Display unit : 1 km/h(MPH)

Gear meter

- Display range : off, highest gear, N and highest gear, show all (N / 1 ~ 6)

Indicator

- Left indicator light (Green)
- VHC light (Amber)
- High beam light (Blue)
- Neutral light (Green)
- Oil pressure light (Red)
- ABS light (Amber)
- Security light (Red)
- Right indicator light (Green)
- Rain mode light (Blue)
- TPMS light (Amber)
- Constant speed light (Amber/Green)
- Engine warning light (Amber)
- Battery discharge light (Red)
- Fog Light (Green)
- TCS light (Amber)
- Temperature warning light (Red)

Fuel meter

- Display range : 10 Levels

Remaining mileage

- Display range : 0 ~ 9,999 km (mile), when mileage is lower than 16 km (10 mile) will display Lo RNG.

Average fuel consumption

- Display range : L/100km, km/L, MPG (US-spec.), MPG (UK-spec.)

Clock

- Display range : 12 / 24 hour format

Engine temp.

- Display range : -40 ~ 300 °C (-40 ~ 572 °F)

Voltmeter

- Display range : 8 ~ 18 V

Air Pressure Gauge

- Display range : Display --- when no sensor is installed, 0 ~ 150 PSI, 0~1034 kPa, 0.0~10.3 bar
- Display unit : 1 PSI, 1 kPa, 0.1 bar

Tire pressure

Display range : --- , Hi, 0 ~ 73 PSI, 0~506 kPa, 0.0~5.0 bar

Display unit : 1 PSI, 1 kPa, 0.1 bar

Odometer

- Display range : 0 ~ 999,999 km (miles) returns to zero upon exceeding
- Display unit : 1 km (mile)

Distance meter A,B

- Display range : 0 ~ 9,999.9 km (miles) returns to zero upon exceeding
- Display unit : 0.1 km (mile)

Mileage maintenance user settings

- Display range : user adjustable (500 ~16,000 km/ 300 ~ 10,000 miles) ~ -999 km (miles), decreases automatically according to the increase of total mileage.
- Display unit : 1 km (mile)

3-2 Features and settings description

●Speedometer	Display range : 0~199 km/h(0~124 MPH) switchable Display unit : 1 km/h(MPH)	●Tire pressure (TPMS, FR RR LR. It shows TPMS if the motorcycle supports it.)	Display range : --- , Hi, 0 ~ 73 PSI, 0~506 kPa, 0.0~5.0 bar Display unit : 1 PSI, 1 kPa, 0.1 bar
○Display interval	<0.5 second	●Backlight brightness	Setting range : 1 /5(darkest)~ 5 / 5(brightest)
○Internal and external odometer	Display range : 0 ~ 999,999 km (mile) returns to zero upon exceeding Display unit : 1 km (mile)	○Backlight color	Setting range : white, red, orange, yellow, green,blue, light blue, purple
○Trip meter A,B	Display range : 0 ~ 9,999.9 km (mile) returns to zero upon exceeding Display unit : 0.1 km (mile)	●Millage maintenance	Setting range : Off/ 500 ~ 16,000 km (300 ~ 10,000 mile) Setting unit : 100 km (mile)
○Tire circumference	Setting range : 50 ~ 210 % Setting unit : 1 %	●Voltage	DC 12 V
●Gear meter	Display range : off, highest gear, N and highest gear, show all(N / 1 ~ 6)	●Operating temperature	-10 ~ 60 °C
●Tachometer	Display Range : 0 ~ 10,000 RPM	○Storage temperature	-20 ~ 80 °C
○RPM shift light	Setting range : 2,000 ~ 10,000 RPM , when the value of RPM has reached the value set, the main screen's backlight will blink in red and white as a warning. Setting unit : 100 RPM	●Specification	JIS D 0203 (S2)
●Engine temp. meter	Display range : 0 ~ 400 °F (32 ~ 248 °C) Display unit : 1 °F (1 °C)	●Meter Size	88.2 x 67.0 x 35.2 mm
○Engine temp.	Display range : -40 ~ 300 °C (-40 ~ 572 °F)	●Meter Weight-D2	70 grams
●Fuel meter	Display range : 10 Levels / 0~100 %	●Meter Weight-Engine temp.	81 grams
○Fuel tank volume	Setting range : OFF/ 1.0 ~ 9.9 US gallons	●Meter Weight-Fuel Level	81 grams
○Average fuel consumption	Display range : OFF, L/100km, km/L, MPG (US spec.) , MPG (UK spec.)	●Indication light	Left indication light (Green) VHC light (Amber) High beam light (Blue) Neutral light (Green) Oil pressure light (Red) ABS light (Amber) Security light (Red) Right indication light (Green) Rain mode light (Blue) TPMS light (Amber) Constant speed light (Amber/Green) Engine warning light (Amber) Battery discharge light (Red) Fog Light (Green) TCS light (Amber) Temperature warning light (Red)
●Clock	Setting range : 12 / 24 hour format		
●Voltmeter	Display range : 8 ~ 18 V		
●Air Pressure Gauge	Display range : Display --- when no sensor is installed, 0 ~ 150 PSI, 0~1034 kPa, 0.0~10.3 bar Display unit : 1 PSI, 1 kPa, 0.1 bar		
○Air Pressure Gauge Calibration	Calibration range : 0 ~ 25 PSI±1PSI Calibration unit : 1 PSI		

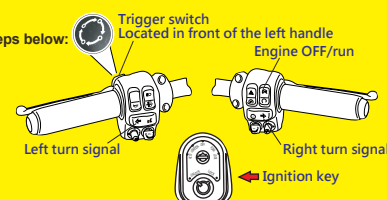
NOTE Design and specification may change without further notice.

3-3 Application list



Scan QR code for the application list.

- * To enter the gauge settings mode, you must follow the steps below:
- 1 : The key must be switched to ON/Accessories.
 - 2 : Engine OFF/run switch must be OFF.
 - 3 : Meter must be displaying ODOMETER.
 - 4 : Hold both turn signal switches for 3 seconds.
 - 5 : Use trigger switch to navigate through settings.



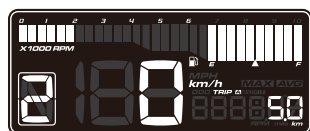
3-4 Main menu functions



- In the total mileage screen, press the **button once** to switch to Trip A screen.
- In the total mileage screen, hold the **button for 3 seconds** to enter into the setting screen. (refer to setting 4)



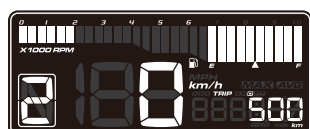
NOTE If accessories 2 and 3 are connected, the oil volume and the temperature screen will be displayed on accessories 2 and 3.



- Trip A screen, press the **button once** to switch to Trip B screen.
- Hold the **button for 3 seconds** to clear the Trip A recordings.



- Trip B screen, press the **button once** to switch to the mileage maintenance screen.
- Hold the **button for 3 seconds** to clear the Trip B recordings.



- In the mileage maintenance screen, press the **button once** to switch to the remaining mileage screen.
- Mileage maintenance will count down from set value. When it reaches 0, the screen will blink to indicate mileage reached.



- When reminding feature is activated, it will automatically return to mileage maintenance screen once the value is reached.
- When reminding feature is activated, it will automatically switch to mileage maintenance screen during startup if the value is reached.



- Hold the **button for 3 seconds** to switch to inform function.



NOTE It will not display if it's not supported by the engine computer.

- Hold the **button for 10 seconds** to clear the mileage maintenance recordings.



○ Start holding the button.



○ On the 3rd second, the inform feature will blink once.



○ On the 5th second, inform feature will switch back, mileage display will begin blinking.



○ During the 6-9th seconds, if the button is released, it will cancel the process.



○ On the 10th second, the mileage maintenance record is cleared.

NOTE Display can be switched off (refer to setting 4-7)



- In the remaining mileage screen, press the **button once** to switch to the average fuel consumption screen.

- If remaining mileage is lower than 16 km (10mile), will display "LO RING" to inform users.



- When reminding feature is activated, it will automatically return to the remaining mileage screen if remaining mileage is too low.
- When reminding feature is activated, it will automatically switch to the remaining mileage screen during startup if remaining mileage is too low.



- Hold the **button for 3 seconds** to switch to inform feature switch.



NOTE It will not display if it's not supported by the engine computer.

- The following situation will result displaying "r----" or no display at all.
 - Abnormal fuel sensor (short / open circuit)
- Fuel related settings will affect this value's precision.

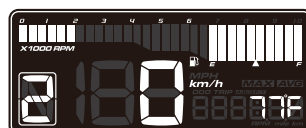


- In the average fuel consumption screen, press the **button once** to switch to the clock screen.

NOTE It will not display if it's incompatible with the engine computer.



- In the clock screen, press the **button once** to switch to the engine temperature screen.



- In the engine temperature screen, press the **button once** to switch to the voltage screen.

NOTE If accessories 2 and 3 are connected the oil volume and the temperature screen will be displayed on accessories 2 and 3.



- In the voltage screen, press the **button once** to switch to the air pressure gauge screen.



- In the air pressure gauge screen, press the **button once** to switch to tire pressure screen.



- In the tire pressure screen, press the **button once** to switch to the MAX. record screen.



NOTE Shows Fr, rr, Lr accordingly to different models.



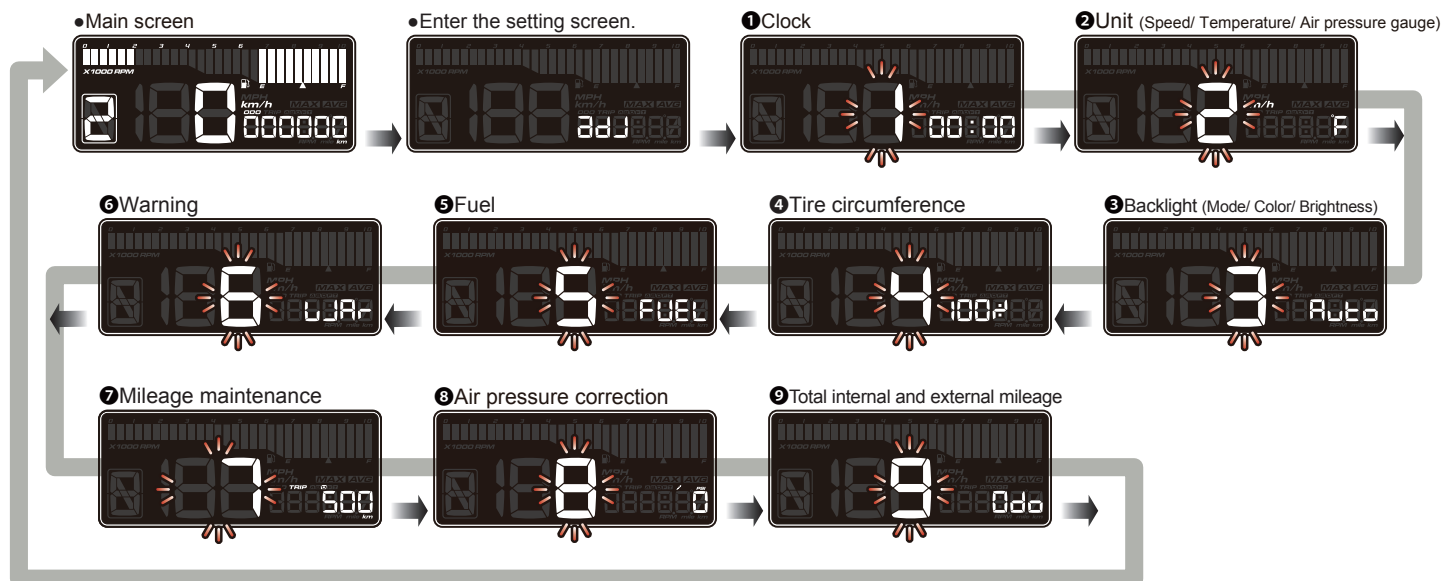
- In the MAX. record screen, press the **button once** to return to the total mileage screen.



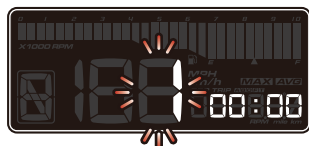
4 Setting screen navigation description

- Press the **button for 3 seconds** on the main screen to switch to the setting screen.
- Press the **button** to select
- ① Clock ② Unit (Speed/ Temperature/ Air pressure gauge) ③ Backlight (Mode/ Color/ Brightness) ④ Tire circumference ⑤ Fuel ⑥ Warning ⑦ Mileage maintenance ⑧ Air pressure correction ⑨ Total internal and external mileage.

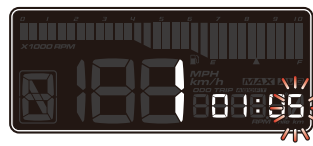
NOTE During setting, if the button is not pressed for 30 seconds, it will automatically return to the startup screen.



4-1 Clock settings



- In the clock screen, hold the **button for 3 seconds** to enter into the settings screen.



- EX : Set clock setting from 12:00 to 1:05.
- Hold the **button for 3 seconds** to return to the clock screen.



- **Example : To set the clock to 12 hour format.**
- Press the **button once** to select desired setting value.

⚠ Now the setting value will blink.

NOTE Setting range : 12h / 24h
Default value : 24h



- EX : Set clock settings from 24 hour format to 12 hour format.
- Hold the **button for 3 seconds** to enter time into the (hour / minute) setting screen.



- **Example : Set clock to 01:05 AM.**
- Hold the **button for 3 seconds** to move the cursor to the desired setting level.



⚠ Now the setting value will blink.

- Press the **button once** to select desired setting value.



NOTE Setting range :
Hour : 1~12 (12 h) / 0~23 (24 h)
Minute : 00~59 minutes.
Default value :
Hour : 12(12h)/0(24h).
Minute : 0.

- The clock screen.

4-2 Unit settings(Speed/ Temperature/ Air pressure gauge)



- In the unit screen, hold the **button for 3 seconds** to enter into the settings screen.

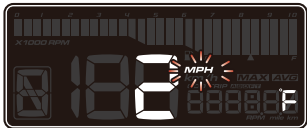


- Example : To set speed unit to MPH(mile).**
- Press the **button once** to select the desired value.

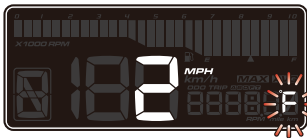
⚠ Now the setting value will blink.

NOTE Setting range : km/h, MPH.
Default value : km/h.

NOTE Total mileage and distance meter unit will vary according to the speed unit.



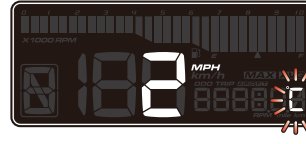
- EX : Set speed unit from km/h to MPH.
- Hold the **button for 3 seconds** to enter into the temperature unit settings screen.



- Example : To set the temperature unit to °C.**
- Press the **button once** to select the desired value.

⚠ Now the setting value will blink.

NOTE Setting range : °C(Celsius) and °F(Fahrenheit).
Default value : °F(Fahrenheit).



- EX : Set temperature unit from °F(Fahrenheit) to °C(Celsius).
- Hold the **button for 3 seconds** to enter into the air pressure gauge unit settings screen.



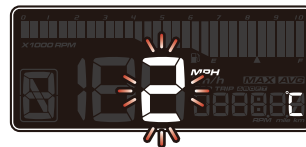
- Example : To set the air pressure gauge unit to BAR.**
- Press the **button once** to select the desired value.

⚠ Now the setting value will blink.

NOTE Setting range : PSI, bar, kPa .
Default value : PSI.



- EX : Set air pressure gauge unit from PSI to BAR.
- Hold the **button for 3 seconds** to return to the unit screen.



- The unit screen.

4-3 Backlight brightness settings (Mode/ Color/ Brightness)



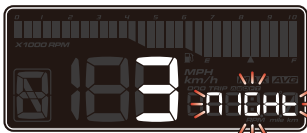
- In the backlight screen, hold the **button for 3 seconds** to enter into the settings screen.



- Example : To set the mode to Night mode.**
- Press the **button once** to select the desired value.

⚠ Now the setting value will blink.

NOTE Setting Auto(automatically switches according to the light : day mode display for the bright environment and Night mode display for the dark environment), Day mode, Night mode.
Default value : Auto.



- EX : Set background from Auto mode to Night mode.
- Hold the **button for 3 seconds** to enter the backlight color(day) setting.



- Example : To set backlight color(day) to blue.**
- Press the **button once** to choose the color.

⚠ Now the setting value will blink.

NOTE Setting range : White, Red, Orange, Yellow, Green, Blue, Indigo, Purple.
Default value : White.

NOTE The backlight color will change immediately after you set the value.



- EX : Set backlight color(day) from white to blue.
- Hold the **button for 3 seconds** to enter the backlight brightness(day) setting.



- Example : To set the backlight brightness (day) to 4/5 (80%).**
- Press the **button once** to select the desired value.

⚠ Now the setting value will blink.

NOTE Setting range : 3/5~ 5/5 (Brightest), 3 different levels available.
Setting unit : 20% per level.
Default value : 5/5(100%).

NOTE The backlight brightness will change immediately after you set the value.



- EX : The backlight brightness (day) setting is changed from 5/5 (100%) to 4/5 (80%).
- Hold the **button for 3 seconds** to enter the backlight color (night) setting.



- Example : To set backlight color(night) to Yellow.
 - Press the **button once** to choose the color .
- ⚠ Now the setting value will blink.

NOTE Settings range : White, Red, Orange, Yellow, Green, Blue, Indigo, Purple.
Default value : White.

NOTE The backlight color will change immediately after you set the value.



- EX : Set backlight color(night) from White to Yellow.
- Hold the **button for 3 seconds** to enter the backlight brightness(night) setting.



- Example : To set the backlight brightness (night) to 2/5 (40%).
- Press the **button once** to select the desired value.

⚠ Now the setting value will blink.

NOTE Setting range : 1/5(Darkest)~ 5/5 (Brightest), 5 different levels available.
Setting unit : 20% per level.
Default value : 3/5(60%).

NOTE The backlight brightness will change immediately after you set the value.

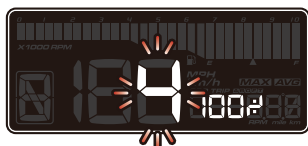


- EX : The backlight brightness (night) setting is changed from 3/5 (60%) to 2/5 (40%).
- Hold the **button for 3 seconds** to return to the backlight screen.



- The backlight screen.

4-4 Tire circumference settings



- In the tire circumference screen, hold the **button for 3 seconds** to enter into the settings screen.



- Example : Set tire percentage from 100% to 105%.
- Hold the **button for 3 seconds** to return to the tire circumference screen.



- Example : To set the tire circumference to 105%.
- Hold the **button for 3 seconds** to move the cursor to the desired setting level.

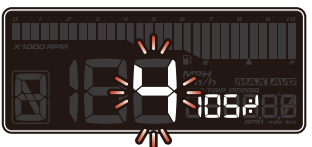


⚠ Now the setting value will blink.

- Press the **button once** to select the desired value.



NOTE Setting range : 50 ~ 210%.
Default value : 100%.



- The tire percentage screen.

4-5 Fuel settings



- In the fuel screen, hold the **button for 3 seconds** to enter into the settings screen.

4-5-1



- In the fuel type screen, hold the **button for 3 seconds** to enter into the fuel type settings screen.



- **Example : To set the fuel type to CUST (user define).**

- Press the **button once** to select desired setting value.

⚠ Now the setting value will blink.

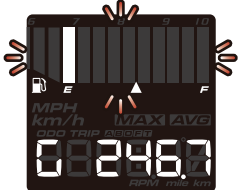
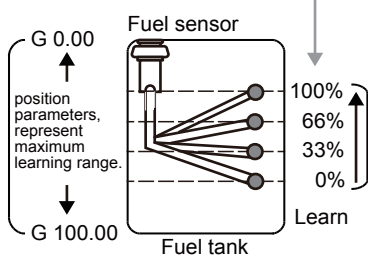
NOTE Settings range:
Hd Std [Harley-Davidson Standard]
CUST [User define]



- **EX : To set fuel type from Hd Std (Harley-Davidson Standard) to CUST (user define).**
- Hold the **button for 3 seconds** to enter into the user define mode.



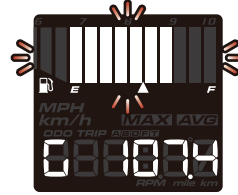
- User defined mode
Needs to learn the position of 0% (E), 33%, 66%, 100% (F) fuel volume.



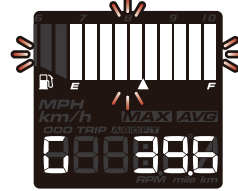
- Fuel volume 0% position learning screen.
- Confirm that there it is low fuel before learning.
- Allow the vehicle to be still for 10 ~ 15 seconds in order to steady the liquid surface.
- Press the button once to learn the current fuel position.
- Hold the button for 3 seconds to enter into the next fuel volume position learning screen.



- Fuel volume 33% position learning screen.
- Confirm that there is 1/3 fuel volume in fuel tank before learning.
- Allow the vehicle to be still for 10 ~ 15 seconds in order to steady the liquid surface.
- Press the button once to learn current fuel position.
- Hold the button for 3 seconds to enter into the next fuel volume position learning screen.



- Fuel volume 66% position learning screen.
- Confirm that there is 2/3 fuel volume in fuel tank before learning.
- Allow the vehicle to be still for 10 ~ 15 seconds in order to steady the liquid surface.
- Press the button once to learn current fuel position.
- Hold the button for 3 seconds to enter into the next fuel volume position learning screen.



- Fuel volume 100% position learning screen.
- Confirm that there is 3/3 fuel volume in fuel tank before learning.
- Allow the vehicle to be still for 10 ~ 15 seconds in order to steady the liquid surface.
- Press the button once to learn current fuel position.
- Hold the button for 3 seconds to enter into the learning conformation screen.



- Learning confirmation screen.
- Hold the button once to save the current learning results. It will then automatically return to the fuel type settings screen.

SAVE → DONE

- If an error occurs in the learning process, it will display "Error" when saving. Exit this learning and return to fuel type screen.

SAVE → ERROR

- Hold the **button for 3 seconds** to abort current learning result and return to the sub settings screen.

SAVE → Abort



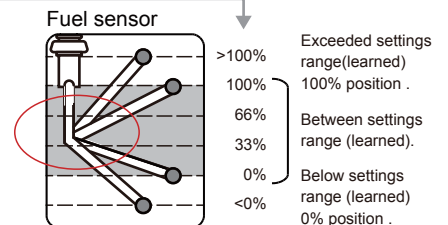
- In the Fuel type settings screen.
- Press the **button once** to enter the next setting.

NOTE Setting range:
• When set to other settings, will enter next setting option.

4-5-2



- Fuel position indicator.
- This screen will display the current liquid surface position. If it exceeds the range, it is recommended to reset the fuel volume parameters to acquire more precise fuel volume and range information.

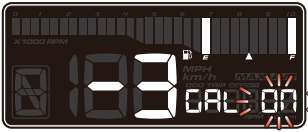


- Press the button to enter fuel volume settings.

4-5-3



- In fuel tank volume settings screen, hold the **button for 3 seconds** to enter into the settings screen.



- **Example : To set fuel volume as ON.**
- Press the **button once** to select desired setting value.
- ⚠ Now the setting value will blink.
- NOTE** Setting range : ON, OFF.



- **EX : Set fuel volume from OFF to ON.**
- Hold the **button for 3 seconds** to enter the fuel volume settings screen.



- **Example : To set fuel volume to 5.7.**
- Hold the **button for 3 seconds** to move the cursor to desired setting level.
- GAL 5.5 → GAL 5.6 → GAL 5.7
- ⚠ Now the setting value will blink.
- Press the **button once** to select desired setting value.
- GAL 5.5 → GAL 5.6 → GAL 5.7
- NOTE** Setting range : 1.0 ~ 9.9 gallons.
- NOTE** Volume calculation method checks for the total volume of the fuel tank and low fuel indicated volume in the user manual of vehicle, then substitutes it into the equation below :

$$\text{total vol.} - (\text{low fuel vol.} / 2) = \text{setting value.}$$
 Then enter the result into the setting value.



- **EX : Set fuel volume value from 5.5 to 5.7.**
- Hold the **button for 3 seconds** to return to fuel volume settings screen.



- In fuel volume settings screen.
- Press the **button once** to enter the next setting.

4-6 Warning settings (Overspeed / Over RPM / Overheat)



- In warning screen, hold the **button for 3 seconds** to enter into the settings screen.

4-5-4



- In fuel consumption settings screen, hold the **button for 3 seconds** to enter into the settings screen.



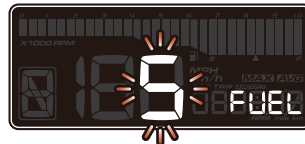
- **Example : To set fuel consumption unit as MPG (US).**
- Press the **button once** to select the desired settings value.
- ⚠ Now the setting value will blink.
- NOTE** Settings range : OFF, L/100 km, km/L, MPG (US), MPG (UK).



- **EX : To set fuel consumption unit from OFF to MPG (US).**
- Hold the **button for 3 seconds** to return to the fuel consumption unit settings screen.



- In the fuel consumption unit settings screen.
- Press the **button once** to return to the fuel screen.



- The fuel screen.

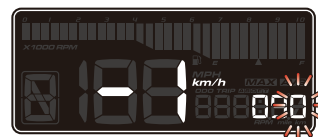
- Press the **button once** to choose the setting number.

- NOTE**
- Warning indicator operation setting -overspeed, please refer to 4-6-1.
- Warning indicator operation setting -over RPM, refer to 4-6-2.
- Warning indicator operation setting -overheat, refer to 4-6-3.

4-6-1 Warning settings - Overspeed



- Hold the **button for 3 seconds** to enter overspeed warning setting screen.



- EX : Set the overspeed warning value from 60 km/h to 90 km/h.
- Hold the **button for 3 seconds** to return to overspeed warning screen.



- **Example : To set overspeed warning value to 90 km/h.**
- Hold the **button for 3 seconds** to move the cursor to the desired settings level.

⚠ Now the setting value will blink.

NOTE Settings range : 30 ~ 199 km/h (19 ~ 124 MPH).
Default value : 60 km/h (38 MPH).



- The overspeed warning screen.
- Press the **button once** to enter next setting.



- Press the **button once** to choose the setting number.

4-6-2 Warning settings - Over RPM



- Hold the **button for 3 seconds** to enter over rpm warning setting screen.



- EX : Set the over rpm warning value from 5,500 RPM to 9,000 RPM.
- Hold the **button for 3 seconds** to return to over rpm warning screen.



- **Example : To set over rpm warning value to 9,000 RPM.**
- Hold the **button for 3 seconds** to move the cursor to the desired settings level.

⚠ Now the setting value will blink.

NOTE Settings range : 1,000 ~ 10,000 RPM.
Default value : 5,500 RPM.



- The over rpm warning screen.
- Press the **button once** to enter next setting.



- Press the **button once** to choose the setting number.

4-6-3 Warning settings - Overheat



- Hold the **button for 3 seconds** to enter overheat warning setting screen.



- EX : Set the overheat warning value from 356 °F to 203 °F.
- Hold the **button for 3 seconds** to return to overheat warning screen.



- **Example : To set overheat warning value to 203 °F.**
- Hold the **button for 3 seconds** to move the cursor to the desired settings level.

⚠ Now the setting value will blink.

NOTE Settings range : 140 ~ 482 °F (60 °C ~ 250 °C).
Default value : 356 °F (180 °C).

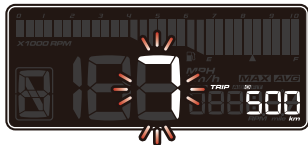


- The overheat warning screen.

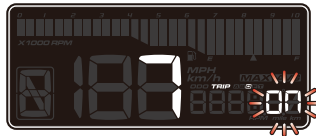


- Press the **button once** to choose the setting number.

4-7 Mileage maintenance settings



- In the mileage maintenance screen, hold the **button for 3 seconds** to enter into the settings screen.

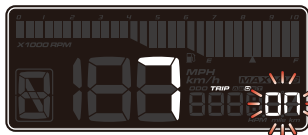


- **Example : To set mileage maintenance to (ON).**

- Press the **button once** to select the desired settings value.

⚠ Now the setting value will blink.

NOTE Display range : ON, OFF.
Default value : ON.



- **EX : Set mileage maintenance to (ON).**
- Hold the **button for 3 seconds** to enter into the mileage maintenance settings screen.

NOTE When it is set to OFF, will directly return to mileage maintenance main screen.



- **Example : To set mileage maintenance value to 800.**

- Hold the **button for 3 seconds** to move the cursor to the desired settings level.

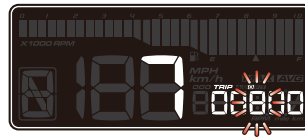


⚠ Now the setting value will blink.

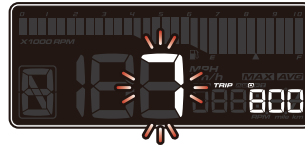
- Press the **button once** to select desired setting value.



NOTE Setting range : 500 ~ 16,000 km
(300 ~ 10,000 mile).
Default value : 500 km(300 mile).



- **EX :** Set the mileage maintenance from 500 to 800.
- Hold the **button for 3 seconds** to return to mileage maintenance screen.



- The mileage maintenance screen.

4-8 Air pressure gauge calibration settings



- In the air pressure gauge calibration screen, hold the **button for 3 seconds** to enter into the settings screen.



- Press the **button once** to calibrate air pressure gauge.

⚠ Now the setting value will blink.

NOTE Calibration range :
0 ~ 25 PSI \pm 1PSI
Default value : 0 PSI.



- If it shows (OPEN), it confirms the SENSOR is installed correctly.



- If it shows (OVER), release the pressure.

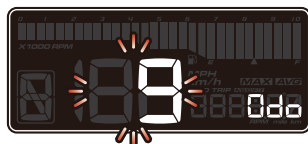


- The calibration is complete.
- Hold the **button for 3 seconds** to return to air pressure gauge calibration screen.

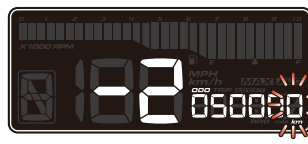


- The air pressure gauge calibration screen.

4-9 Total internal and external odometer settings



- In the total mileage screen, hold the **button for 3 seconds** to enter into the settings screen.



- EX : Set the total external mileage from 10,000 to 50,000 km.
- Hold the **button for 3 seconds** to return to the total external mileage settings main screen.

4-9-1



- **Example : Current total internal mileage display is 5 km.**
- Press the **button once** to enter into the total external mileage settings screen.

⚠ User unable to adjust or remove total internal mileage.

NOTE Display range : 0 ~ 999,999 km (mile).



- Total external mileage settings main screen.
- Press the **button once** to return to total mileage screen.

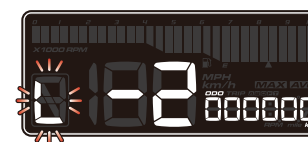
4-9-2



- In the total external mileage settings main screen, hold the **button for 3 seconds** to enter into the loading screen for the total external mileage.



- The total mileage screen.
- Press the **button once** to return to startup screen.



- To import the original bike mileage from ECU to the meter.
- In the loading screen for the total external mileage, press and hold the **button for 3 seconds** to load the current vehicle mileage once.

NOTE If the tire size setting was adjusted, the meter mileage will NOT be synchronized with the original bike mileage from the ECU.



- External mileage is imported from the ECU.
- **Example : To set external total distance value to 50,000 km.**
- Hold the **button for 3 seconds** to move the cursor to the desired settings level.



⚠ Now the setting value will blink.

- Press the **button once** to select desired setting value.



NOTE Setting range : 0 ~ 999,999 km (mile).

5 Troubleshooting

The following situations do not indicate malfunctions of the product. Check the following before taking it in for repair.

Trouble	Check item	Trouble	Check item
The meter doesn't work when the power is on.	<ul style="list-style-type: none"> • The power isn't supplied to the meter. → Make sure the wiring is connected. The wiring and fuse are not broken. → The battery is too old to supply needed power (DC 12 V). 	Speed appears incorrectly.	<ul style="list-style-type: none"> • May be wrong settings. → Check the settings menu to confirm whether the setting for speed is correct.
The meter shows wrong information.	<ul style="list-style-type: none"> • Check the voltage of your battery, and make sure the voltage is over DC 12 V. 	The clock is incorrect.	<ul style="list-style-type: none"> • May be wrong setting. → Check the setting list to see whether the setting for clock is correct.

※ If the problems still cannot be solved, contact our technical department for assistance.