

Carburetors

KOSO 
NORTH AMERICA

www.kosonorthamerica.com

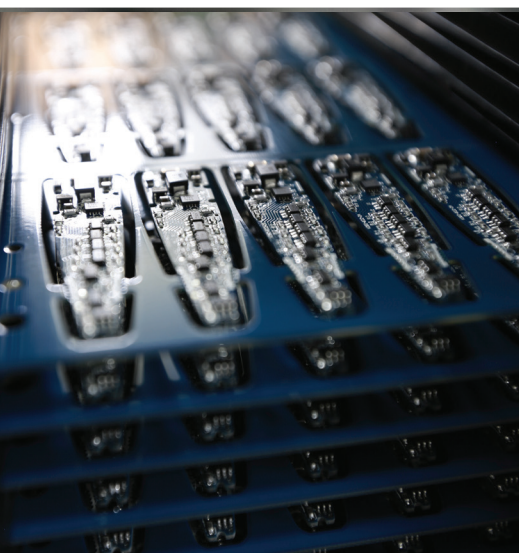
2023

Koso's philosophy

Koso, a synonym for quality and performance. With more than 35 years of experience designing and manufacturing high quality products, Koso has become well known across the powersports and OEM industries for its good reputation for reliability, innovation and capability. Whether we are manufacturing a product under private label, OEM or aftermarket products quality always remains our top priority. Innovation and creating new technologies are the keys to Koso's philosophy and drives us to continue pushing the limit further.

For several years now, Koso has had the opportunity to work with an outstanding team of engineers. Along with our state of the art testing equipment and production facilities, Koso has remained a leader in analog and digital technology. Koso produces a wide range of quality gauges/meters, heated equipment, LED indicators taillights and headlights as well as mirrors and engine parts. Koso is proud to offer a complete line of quality products for serious riders.

KOSO 
NORTH AMERICA



KCR

part

DA28C000

KCR carburetor fits 2 strokes

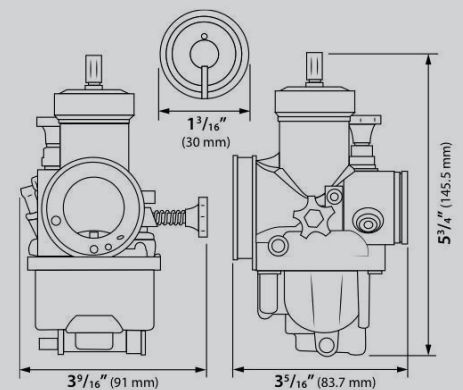
Our Koso KCR carburetor was designed to maximize the air/fuel ratio for a better performance. Built from the best quality components, this 28 mm carburetor offers many customizing options with choice, such as various jet and needle sizes.



(R = Range U= Unit)

Specifications

- Carburetor size 28mm
- Slow jet #42
- Jet needle setting R: 3
- Main jet #122



KSR

DA928300

28 mm

DA930300

30mm

DA932300

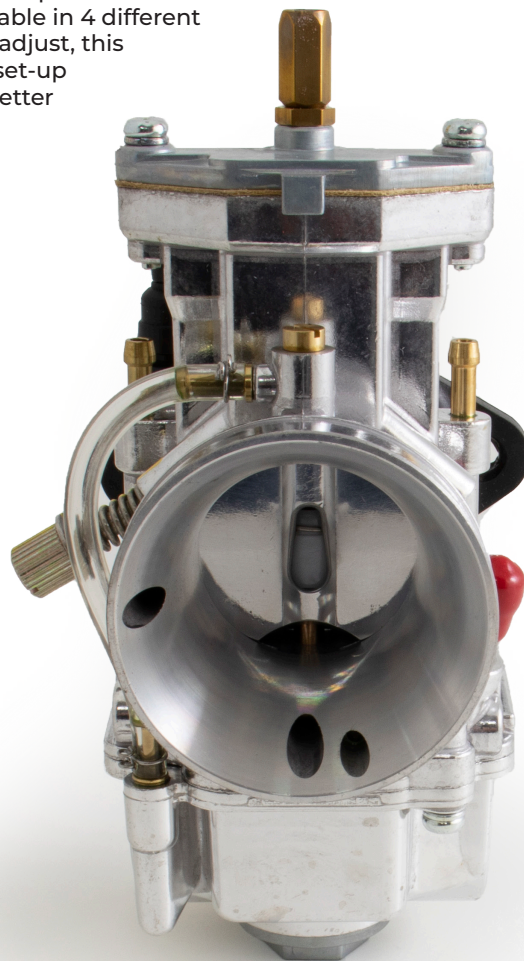
32mm

DA934300

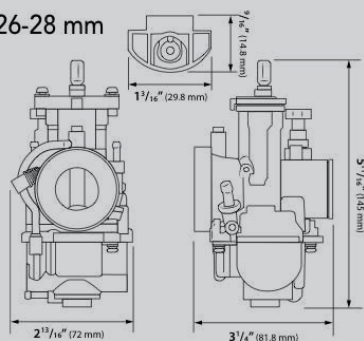
34mm

KSR carburetor fits 4 strokes

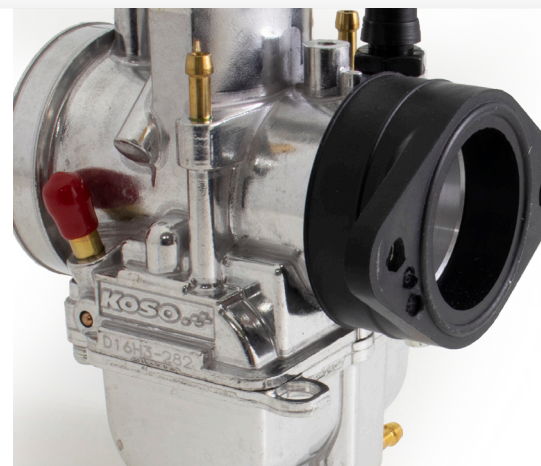
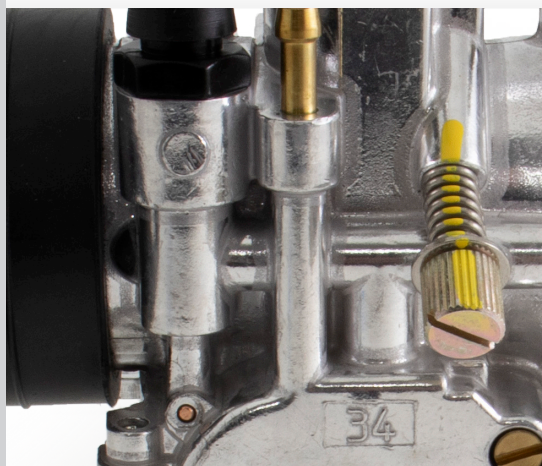
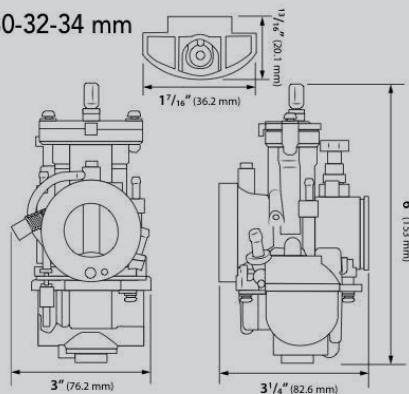
The KSR carburetor features a semi-flat D-style throttle valve that increase the fuel flow for a better throttle reaction. It also reduces the incomplete combustion phenomenon, and therefore improve the combustion efficiency. Available in 4 different sizes and easy to install and adjust, this carburetor will allow you to set-up the ideal air/fuel ratio for a better performance.



24-26-28 mm



30-32-34 mm

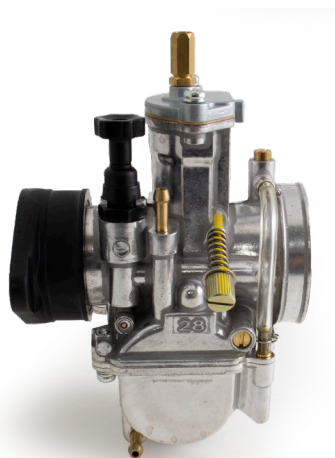


28mm

Specifications

(R = Range U= Unit)

- Air adjustment screw
1 1/2
- Slow jet
#40
- Jet needle setting
R: 3
- Jet needle
J
- Main jet
#100
- Power jet
#30

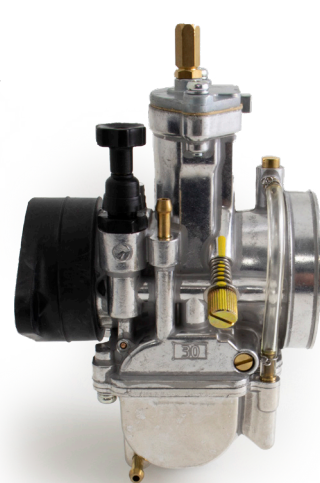


30mm

Specifications

(R = Range U= Unit)

- Air adjustment screw
1 1/2
- Slow jet
#38
- Jet needle setting
R: 3
- Jet needle
J
- Main jet
#122
- Power jet
#30

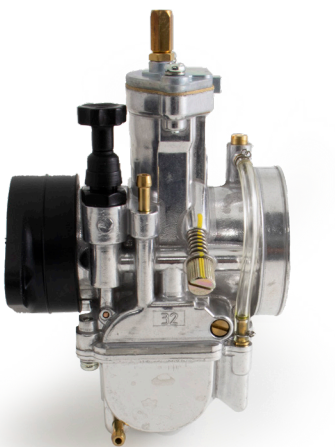


32mm

Specifications

(R = Range U= Unit)

- Air adjustment screw
1 1/2
- Slow jet
#42
- Jet needle setting
R: 3
- Jet needle
J
- Main jet
#122
- Power jet
#30



34mm

Specifications

(R = Range U= Unit)

- Air adjustment screw
1 1/2
- Slow jet
#40
- Jet needle setting
R: 3
- Jet needle
J
- Main jet
#122
- Power jet
#30





Visit our website to view over 300 great products and accessories and/or sign up for our Newsletter to get exclusive updates and new release.

www.kosonorthamerica.com



Contact Us

Order : 1 877 777-0604

Tech. : 450 359-0604

Fax : 450 359-0849

Email : info@koso-na.com



PRINTED IN CANADA

